

MiMo 4G/5G Dome Combination Antenna Range

L[G]M[X]M[X]-6-60[-24-58]

PANORAMA ANTENNAS



- Low Profile 2x2 4G/5G MiMo
- Up to 6x6 MiMo Dual Band WiFi 6E
- Optional GPS/GNSS Active Antenna 26dB LNA

The L[G]M[X]M[X]-6-60[-24-58] range has been designed to provide 2x2 4G/5G MiMo performance from 617-960/1427-6000MHz in a robust low profile package. The flexible platform allows the main elements to be combined with a number of other functions including GPS/GNSS and up to 6x6 MiMo WiFi 2.4/4.9-7.2GHz.

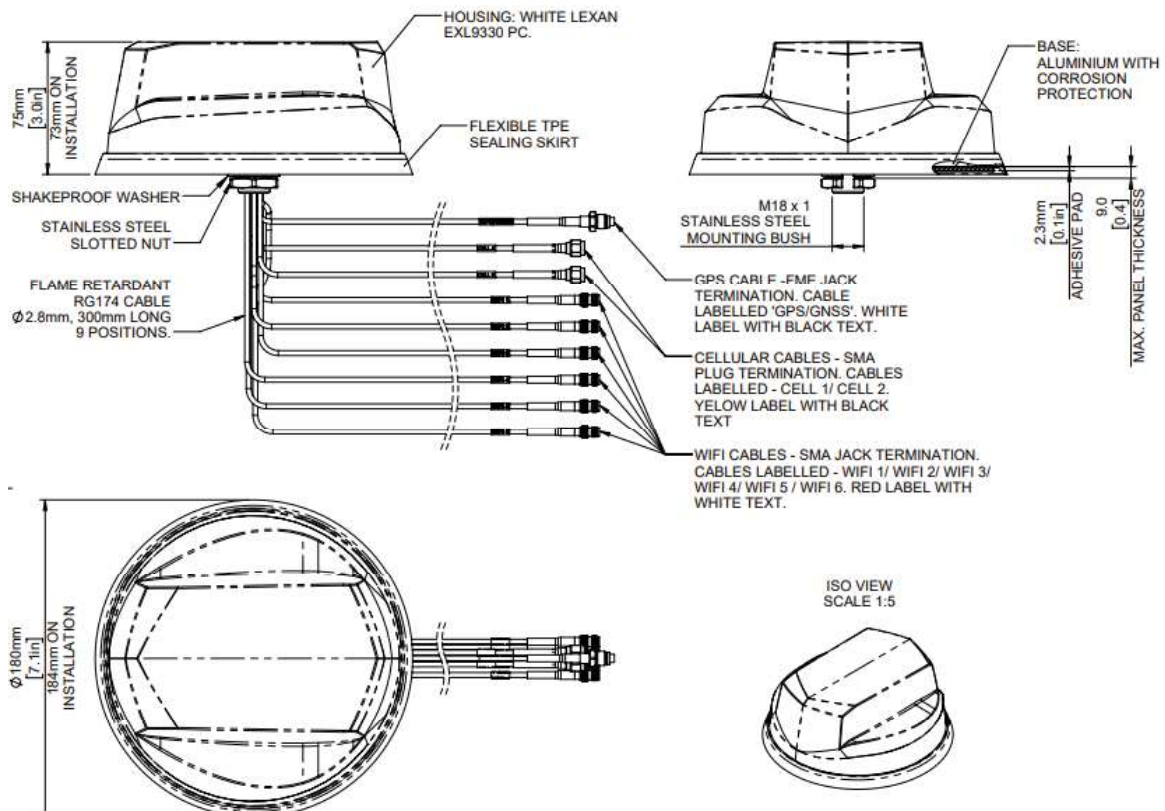
The antenna is designed to be panel mounted and can be fitted on a conductive or non-conductive panel. Supplied with integrated flame retardant RG174 cables (Compliant to UN ECE R118.03 and EN45545-2) and a halogen free flame retardant radome the antenna is suitable for many environments and applications.

The LGM variants have an integrated GPS/GNSS module supporting GPS, Glonass, Galileo and Compass with 26dB LNA gain. This GPS module features advanced filtering for LTE B13/14 designed to minimise potential in band interference.

The antenna is available with a black or white radome which meets IK10 for vandal resistance and IP69K for ingress protection.

Technical Drawing

LGMHM-6-60-24-58 Shown



MiMo 4G/5G Dome Combination Antenna Range

L[G]M[X]M[X]-6-60[-24-58]

PANORAMA ANTENNAS

Product Data

Part No.

LGMHM-6-60-24-58 LGMHMB-6-60-24-58 LGMQM-6-60-24-58 LGMQMB-6-60-24-58

Electrical Data

Frequency Range (MHz)	4G/5G Elements	2x 617-960 / 1427-6000		
	WiFi Elements	6x 2.4/4.9-7.2GHz		4x 2.4/4.9-7.2GHz
Peak Gain: Isotropic : All Elements Fed		617-960MHz	5	
	4G/5G Elements	1427-3800MHz	9	
		4900-6000MHz	10	
	WiFi Elements	2.4GHz	8	
Typical Efficiency		4.9-7.2GHz	10	
	4G/5G Elements	>70%		
Isolation	WiFi Elements	>80%		
	4G/5G Elements	>12dB		
Correlation Co-efficient	WiFi Elements	>20dB		
	4G/5G Elements	< 0.1		
Nominal Impedance	WiFi Elements	<0.1		
		50Ω		

GPS/GNSS Data

Frequency Range (MHz)	1562-1612
VSWR	<2.0:1 ± 4MHz
Gain: LNA	26dB
Out of band rejection	>40dB (@ > +/- 100MHz f)
Typical Noise Figure	-2.7dB
Notch Filter rejection @787MHz	23dBm
Operating Voltage	3 - 5V DC
Typical Current (mA)	15

Mechanical Data

Dimensions (mm)	Height	75 (3")			
	Diameter	180 (7.1")			
Operating Temp	-40° / +80°C (-40° / +176°F)				
Colour	White	Black	White	Black	
Ingress Protection	IP69K				

Mounting Data

Mounting type	Panel mount
Max panel thickness (mm)	7 (0.27")
Mounting hole (mm)	19 (3/4")

Cable Data

All Cables	Type	RG174 -FR (UN ECE R118.03 Compliant)
	Diameter (mm)	2.8 (0.1")
	Length (m)	0.3 (1')

Terminations

4G/5G	SMA (m)
WiFi	SMA (f)
GPS/GNSS	FME (f)

MiMo 4G/5G Dome Combination Antenna Range

L[G]M[X]M[X]-6-60[-24-58]

PANORAMA ANTENNAS

Product Data

Part No.

LGMTM-6-60-24-58 LGMTMB-6-60-24-58 LGMDM-6-60-24-58 LGMDB-6-60-24-58

Electrical Data

Frequency Range (MHz)	4G/5G Elements	2x 617-960 / 1427-6000		
	WiFi Elements	3x 2.4/4.9-7.2GHz		2x 2.4/4.9-7.2GHz
Peak Gain: Isotropic : All Elements Fed	4G/5G Elements	617MHz-960MHz	5	
		1427-3800MHz	9	
	WiFi Elements	4900-6000MHz	10	
		2.4GHz	8	
Typical Efficiency	WiFi Elements	4.9-7.2GHz	10	
		4G/5G Elements	>70%	
Isolation	WiFi Elements	4G/5G Elements	>12dB	
		WiFi Elements	>20dB	
Correlation Co-efficient	WiFi Elements	4G/5G Elements	< 0.1	
		WiFi Elements	<0.1	
Nominal Impedance		50Ω		

GPS/GNSS Data

Frequency Range (MHz)	1562-1612
VSWR	<2.0:1 ± 4MHz
Gain: LNA	26dB
Out of band rejection	>40dB (@ > +/- 100MHz f)
Typical Noise Figure	-2.7dB
Notch Filter rejection @787MHz	23dBm
Operating Voltage	3 - 5V DC
Typical Current (mA)	15

Mechanical Data

Dimensions	Height	75 (3")			
	Diameter	180 (7.1")			
Operating Temp	-40° / +80°C (-40° / +176°F)				
Colour	White	Black	White	Black	
Ingress Protection	IP69K				

Mounting Data

Mounting type	Panel mount
Max panel thickness (mm)	7 (0.27")
Mounting hole (mm)	19 (3/4")

Cable Data

All Cables	Type	RG174 -FR (UN ECE R118.03 Compliant)
	Diameter (mm)	2.8 (0.1")
	Length (m)	0.3 (1')

Terminations

4G/5G	SMA (m)
WiFi	SMA (f)
GPS/GNSS	FME (f)

MiMo 4G/5G Dome Combination Antenna Range

L[G]M[X]M[X]-6-60[-24-58]

Product Data

Part No.

LGMM-6-60 LGMMB-6-60 LPMM-6-60 LPMMB-6-60

Electrical Data

Frequency Range (MHz)	4G/5G Elements	2x 617-960 / 1427-6000
Peak Gain: Isotropic : All Elements Fed	617-960MHz	5
	4G/5G Elements 1427-3800MHz	9
	4900-6000MHz	10
Typical Efficiency	4G/5G Elements	>70%
Isolation	4G/5G Elements	>12dB
Correlation Co-efficient	4G/5G Elements	< 0.1
Nominal Impedance		50Ω

GPS/GNSS Data

Frequency Range (MHz)	1562-1612	-
VSWR	<2.0:1 ± 4MHz	-
Gain: LNA	26dB	-
Out of band rejection	>40dB (@ > +/- 100MHz f)	-
Typical Noise Figure	-2.7dB	-
Notch Filter rejection @787MHz	23dBm	-
Operating Voltage	3 - 5V DC	-
Typical Current (mA)	15	-

Mechanical Data

Dimensions	Height	75 (3")			
	Diameter	180 (7.1")			
Operating Temp	-40° / +80°C (-40° / +176°F)				
Colour	White	Black	White	Black	
Ingress Protection	IP69K				

Mounting Data

Mounting type	Panel mount
Max panel thickness (mm)	7 (0.27")
Mounting hole (mm)	19 (3/4")

Cable Data

All Cables	Type	RG174 -FR (UN ECE R118.03 Compliant)
	Diameter (mm)	2.8 (0.1")
	Length (m)	0.3 (1')

Terminations

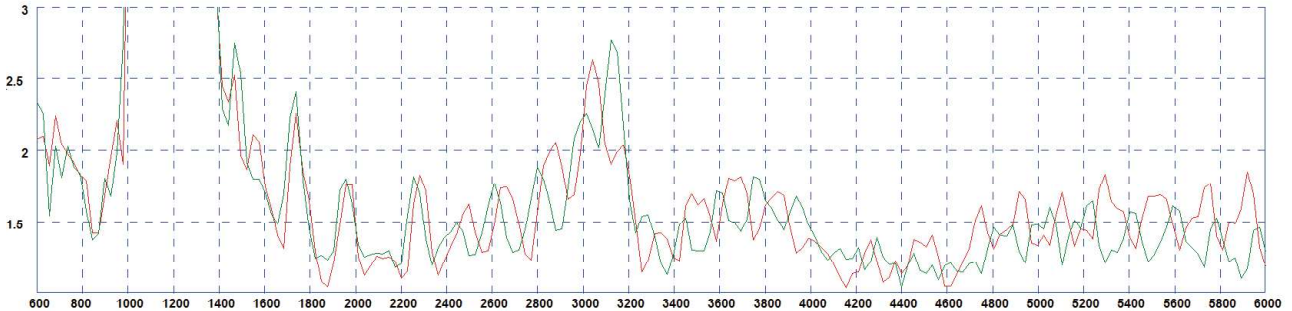
4G/5G	SMA (m)
GPS/GNSS	FME (f) -

MiMo 4G/5G Dome Combination Antenna Range

L[G]M[X]M[X]-6-60[-24-58]

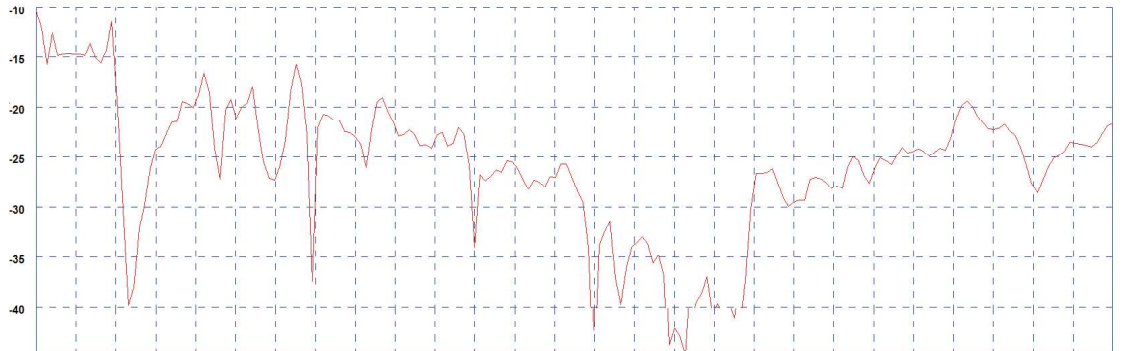
Electrical Data - Cell

Typical VSWR - 4G/5G Elements*



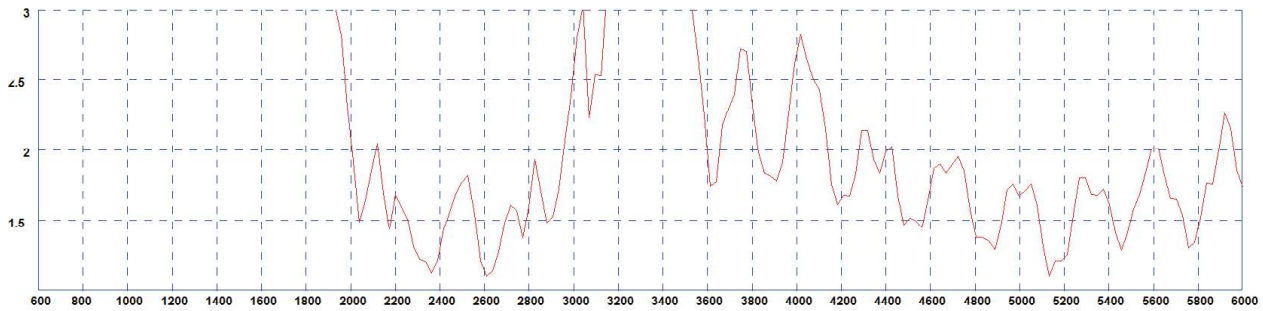
* measured with 0.5m (1.5') of RG174 cable on a 600x600mm (2'x2') groundplane

Typical Isolation - 4G/5G Elements*



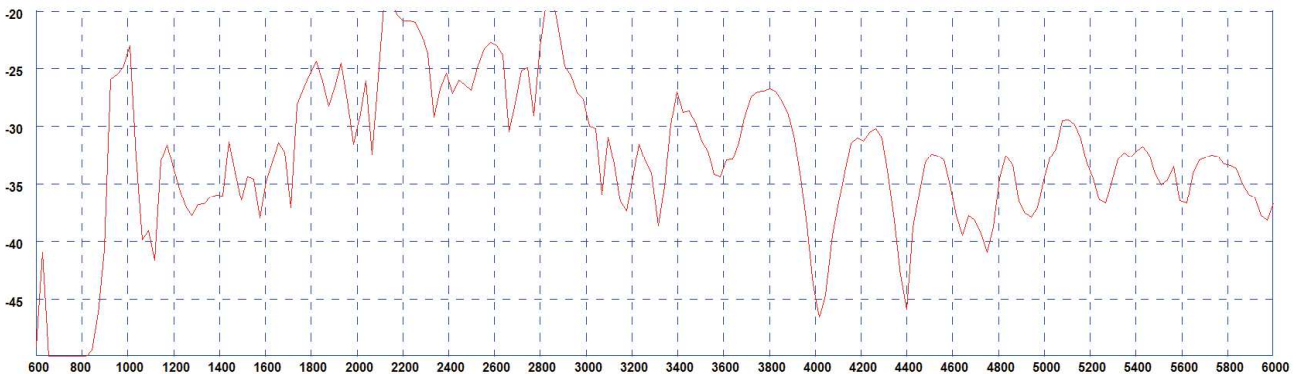
* measured with 0.5m (1.5') of RG174 cable on a 600x600mm (2'x2') groundplane

Typical VSWR - WiFi Elements*



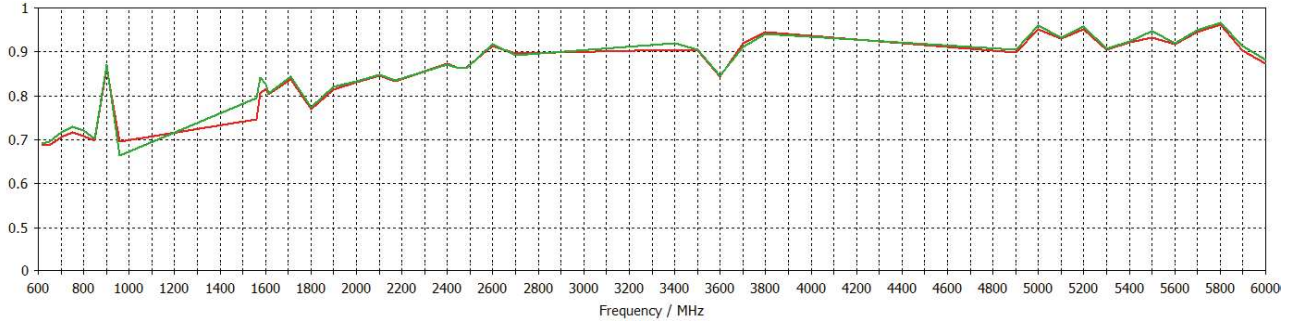
* measured with 0.5m (1.5') of RG174 cable on a 600x600mm (2'x2') groundplane

Typical Isolation - WiFi Elements*



* measured with 0.5m (1.5') of RG174 cable on a 600x600mm (2'x2') groundplane

Typical Efficiency- 4G/5G Elements*



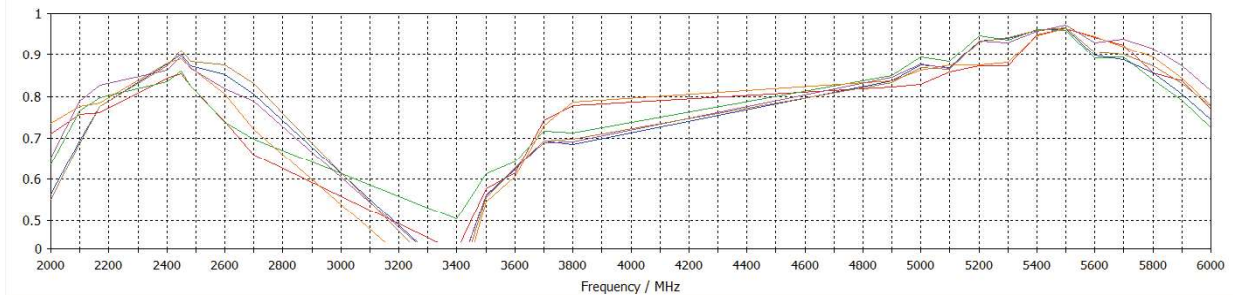
* Efficiency modelled with CST Microwave Studio and ignores cable losses

Typical Peak Gain - 4G/5G Elements*



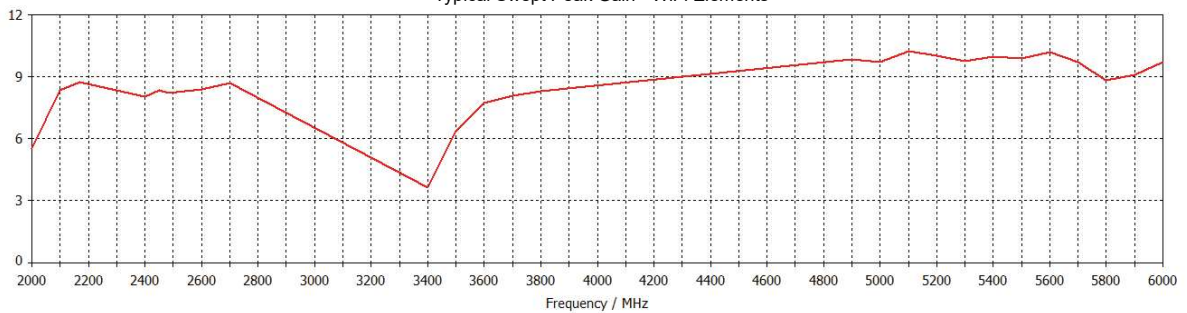
*Swept peak gain modelled with all elements fed in CST Microwave Studio on a 600x600mm (2'x2') ground plane excluding cable loss

Typical Efficiency - WiFi Elements*



* Efficiency modelled with CST Microwave Studio and ignores cable losses

Typical Swept Peak Gain - WiFi Elements*



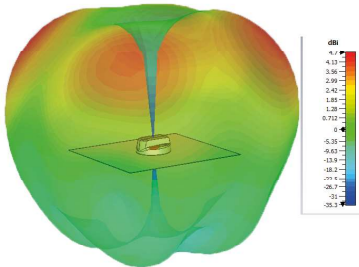
*Swept peak gain modelled with all elements fed in CST Microwave Studio on a 600x600mm (2'x2') ground plane excluding cable loss

MiMo 4G/5G Dome Combination Antenna Range

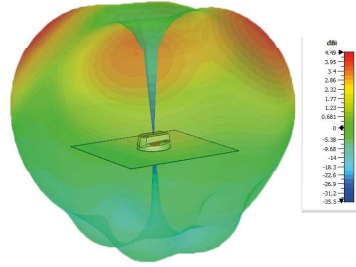
L[G]M[X]M[X]-6-60[-24-58]

4G/5G Pattern Data

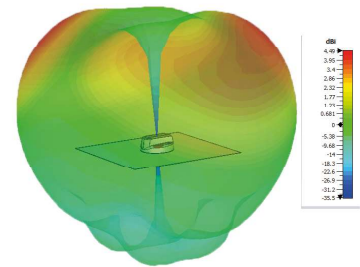
Typical 3D Pattern - 4G/5G Elements 617MHz



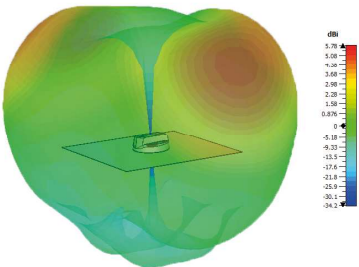
Typical 3D Pattern - 4G/5G Elements 700MHz



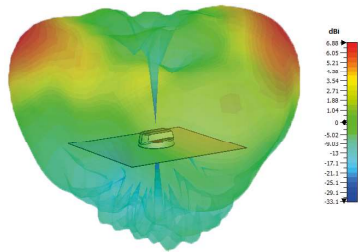
Typical 3D Pattern - 4G/5G Elements 800MHz



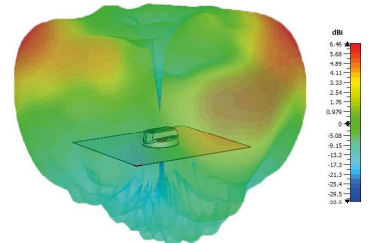
Typical 3D Pattern - 4G/5G Elements 900MHz



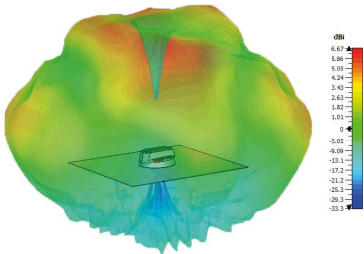
Typical 3D Pattern - 4G/5G Elements 1800MHz



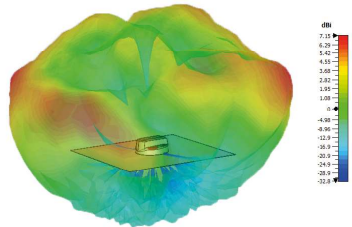
Typical 3D Pattern - 4G/5G Elements 2000MHz



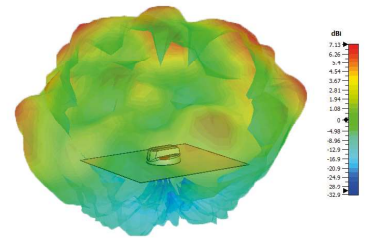
Typical 3D Pattern - 4G/5G Elements 2600MHz



Typical 3D Pattern - 4G/5G Elements 3600MHz

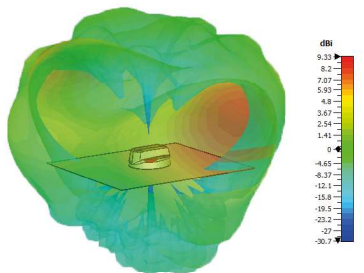


Typical 3D Pattern - 4G/5G Elements 5400MHz

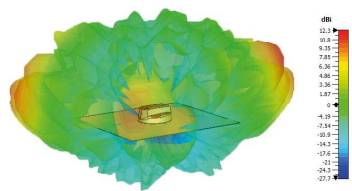


WiFi Pattern Data

Typical 3D Pattern - WiFi Elements 2400MHz



Typical 3D Pattern - WiFi Elements 5400MHz



*Patterns are LGMHM-6-60-24-58 modelled in CST Microwave Studio with all elements of each type fed.