



Connects2Vision

CAM-MB10-AD

**Camera Add-on Interface for select Mercedes vehicles with
NTG6-MBUX non-navigation systems**



www.c2vision-eu.com



ABOUT THIS PRODUCT...

CAM-MB10-AD

The CAM-MB10-AD is a camera add on kit which allows you to add an aftermarket reversing camera whilst retaining the use of your factory head unit along with two side cameras and a front view camera on various Mercedes models with 7" screens (without navigation) and NTG6-MBUX systems, for vehicles with 31-pin connector (see Applications for specific vehicles). This system is specifically designed to add an aftermarket camera to the OEM system, but can also be used to retain the vehicle's factory camera input. Following the simple installation process the camera image can be automatically viewed via reverse gear or manually through the vehicle's controls. Designed for vehicles with 7" monitors and a 31-pin connectors.

Note: only compatible with vehicles that have non-navigation systems as standard.

APPLICATION LIST

**Mercedes A-Class (W177) 2018> Mercedes B-Class (W247) 2018>
Mercedes CLA Coupe (C118) 2019> Mercedes CLA Shooting Brake (X118) 2019>
Mercedes GLB (X247) 2019> Mercedes Sprinter (W907/910) 2018>**

PRIOR TO INSTALLATION

Read the manual prior to installation. Technical knowledge is necessary for installation. The place of installation must be free of moisture and away from heat sources. Please ensure you use the correct tools to avoid damage to the vehicle or product.

Connects2 can not be held responsible for the installation of this product.

TECHNICAL SUPPORT

Connects2 want to provide a fast and suitable resolution should you encounter any technical issues. With this in mind, when contacting Connects2, try to provide as much Information as possible. This will speed up the process and help us to help you.

Please use our dedicated online technical support centre: support.connects2.com

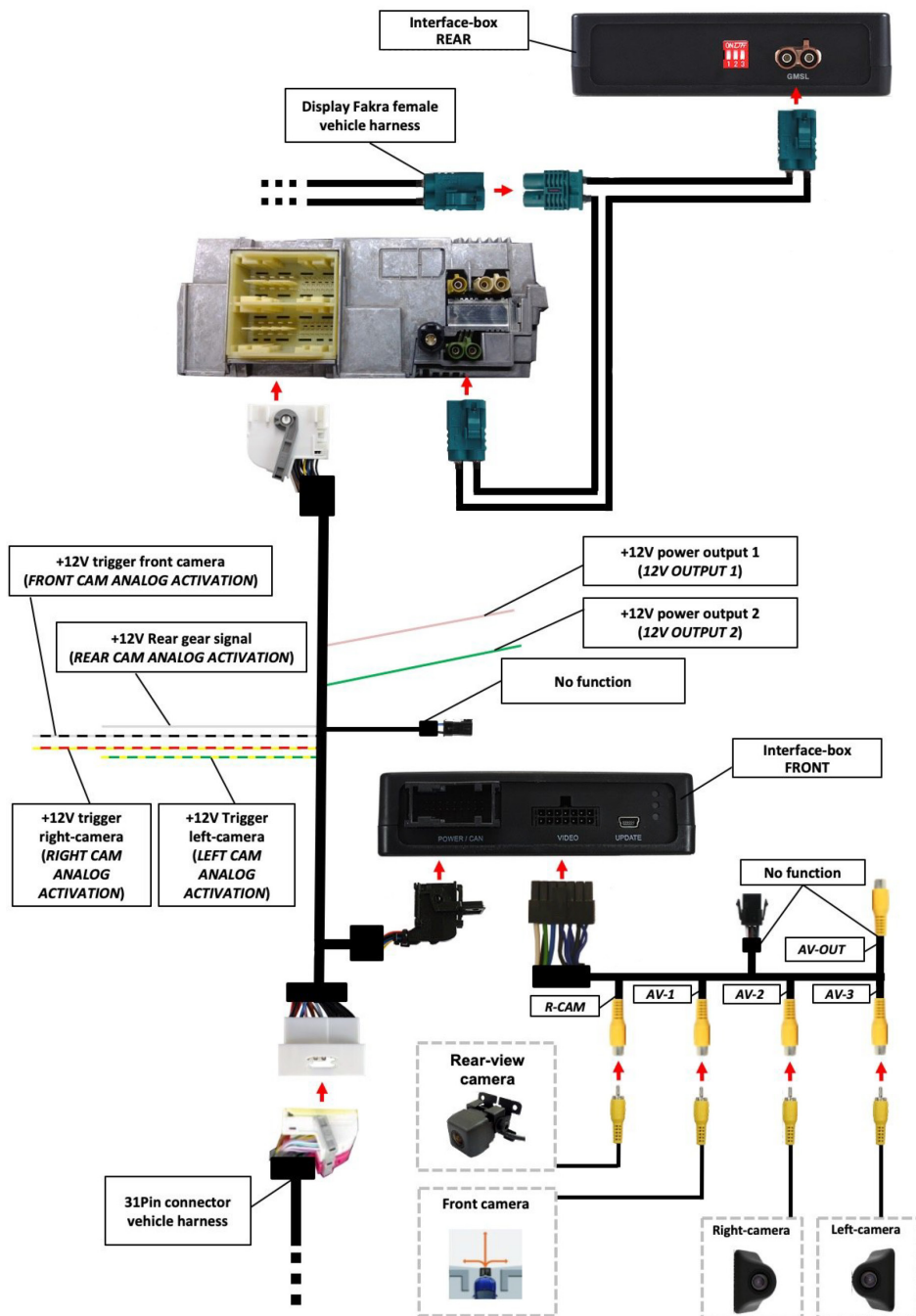


Subscribe to our YouTube Channel for installation guides and tips... www.youtube.com/connects2

DISCLAIMER

The information provided in this document is subject to change without notice due to manufacturer changes and/or improvements to the product/s. This instruction manual is based on documented data and research. The manufacturer of this product cannot be held responsible for any changes made to the vehicle by the manufacturer or damages that may occur through the installation of this product in accordance with the steps outlined herein.

CONNECTION DIAGRAM



SETTING DIPSWITCHES

Set the dipswitches in accordance to the type of monitor within the vehicle. The interface will come with the dipswitches defaulted in the following order:

Head Unit	Dip 1	Dip 2	Dip 3
7" NTG6 Screen	OFF	OFF	OFF

NOTE: you will need to reset power to the interface after any change to any of the dipswitches.

INTERFACE LED STATUS

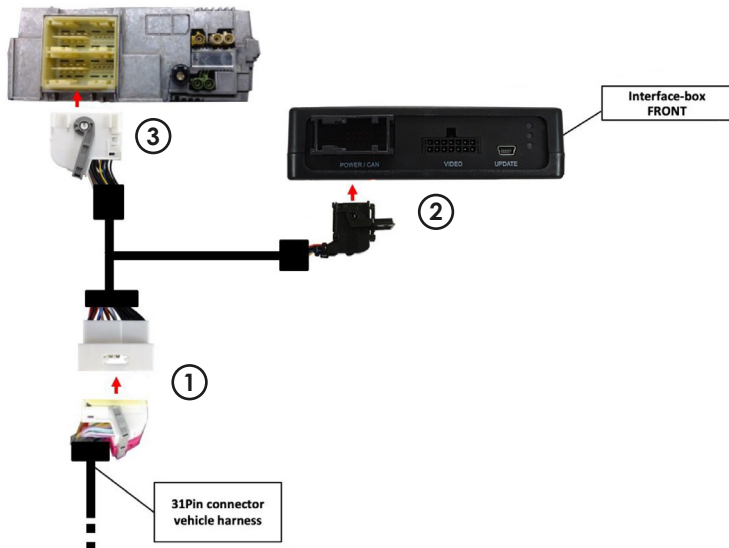
Located on the front of the CAM-MB10-AD interface box you will notice 3x LED's. These 3x LED's will showcase the status of both the interface as well as any other video source. Opposite is a list of the colours as well as the meaning of the 3x LED's:



- Valid input source
- CAN ok
- Power

INSTALLATION

Connecting Interface & Harnesses

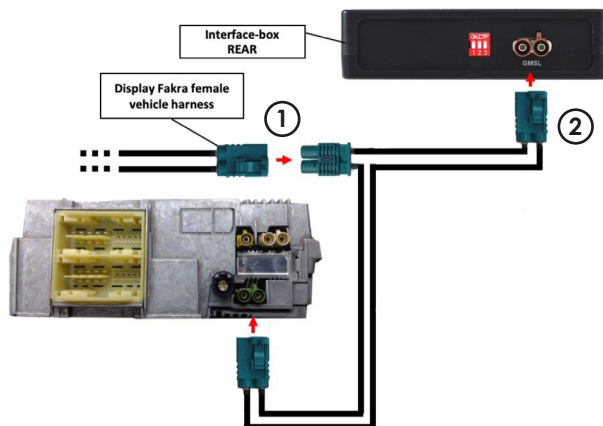


1. Remove vehicles female power connector and proceed to plug this into CAM-MB10-AD's male connector on the provided harness.

2. Connect the 18-pin amp connector to the rear of the box.

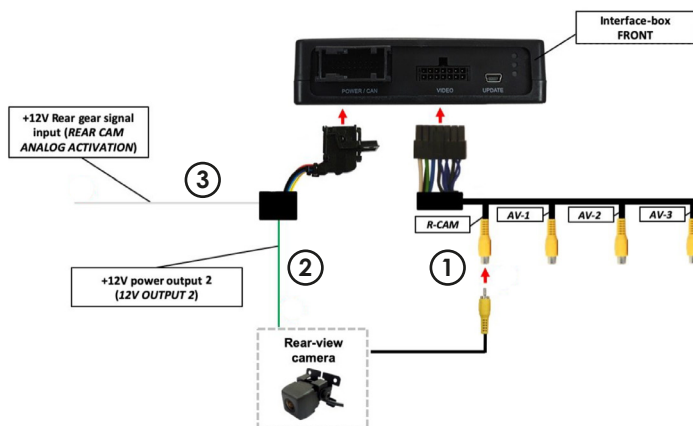
3. Once these connections are established (including the GMSL and any video input connections) connect the new 31-pin connector on the CAM-MB10-AD harness to the head unit.

Connecting GMSL Connection



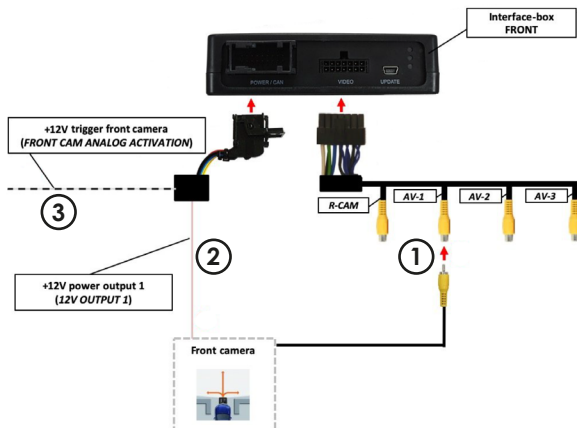
1. Remove the GMSL connection from behind the original head unit and then connect this to the male connection on the GMSL extension wire.
2. With the original GMSL connection attached to the extension lead, connect both the female connectors to between the rear of the interface box and the head unit's pre-existing connection.

Connecting Aftermarket Reverse Camera



1. Connect the 14-pin video harness to the interface box and then connect the rear camera's RCA connector to the 'R-Cam' RCA.
2. Attach the green wire to the reverse cameras 12V power supply.
3. If the reverse signal of the vehicle is not done via the CAN-Bus, connect the white wire to a source of 12V Reverse.

Connecting Aftermarket Front Camera

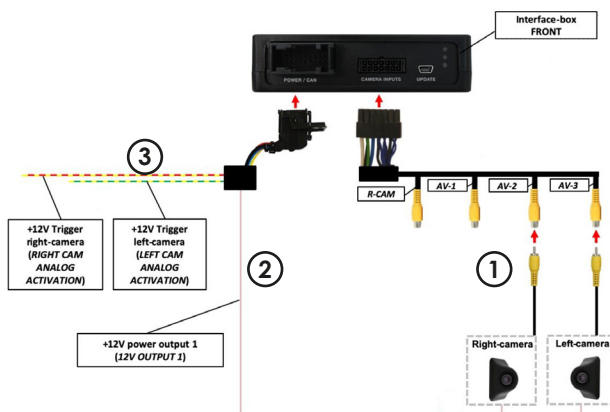


1. Connect the 14-pin video harness to the interface box and then connect the front camera's RCA connector to the 'AV-1' RCA.

2. Attach the pink wire to the front cameras 12V power supply.

3. If the signal of the vehicle is not done via the CAN-Bus, connect the white/ black wire to the vehicles 12V analogue indicator signal wiring.

Connecting Aftermarket Side Cameras



1. Connect the 14-pin video harness to the interface box and then connect the side camera's RCA connectors to the 'AV-2' & 'AV-3' RCAs.

2. Attach the pink wire to the side cameras 12V power supply.

3. If the signal of the vehicle is not done via the CAN-Bus, connect the yellow/ red (right) and yellow/green (left) wires to the vehicles 12V analogue indicator signal wiring.

OSD (ON SCREEN DISPLAY) OPERATION

The CAM-MB10-AD interface also contains a configuration menu wherein you are able to adjust settings/configurations for select features and functions. To access and control this menu system, see the infographics below:

Button layout for control of the OSD system:



For all vehicles, the inputs are enabled in the following order:

Rear CAM > Front CAM > Right CAM/AV1 > Left CAM/AV2 > ...

Inputs that are not enabled will automatically be skipped. Exiting is achieved upon a long press.

OSD (ON SCREEN DISPLAY) OPERATION

Once in the CAM-MB10-AD's OSD Menu system, the following menus & options are available:

Main Menu	Menu Item	Setting Variable	Detail
Inputs	RVC	Off	Rear-view camera deactivated.
		On	Switch to rear camera if reverse gear engaged and/or PDC is activated.
		OEM	If factory rear camera exists. Interface will turn off if PDC or reverse gear is enabled and displays factory camera.
	Front Cam	Off	Front-view camera deactivated.
		On	Switch to front camera if parking process is enabled and reverse gear released.
	Right VC/AV1	On	Right camera input activated.
	Left VC/AV2	On	Left camera input activated.
Option 1	Park Logic	R.Gear Only	Camera(s) enabled during parking process (not suitable for front camera operation).
		Speed_Time	Camera(s) enabled during parking process and up to 10km (speed adjustable) for up to 20 seconds.
	RVC Lines	On/Off	Interactive lane lines de/activated.
	PowerOut1 (Pink wire)	1.CAN 2.ACC 3.CAM	1. 12V when interface is on (red LED on) 2. 12V when ignition is on 3. 12V when the camera input is activated
	PowerOut2 (Green wire)	4.Reverse Gear 5.AVS 6.Off	4. 12V when reverse gear is engaged 5. 12V when interface video-source is manually activated 6. Trigger output deactivated
	Car Type	Sprinter/Others	Vehicle type selection.
	Factory Reset	-	Reset the CAM-MB10-AD to factory settings.
Option 2	R/F Cam Till	xx	Speed setting for deactivating of the camera image.
	F/S Cam From	xx	Speed range setting for front and side cameras (minimum).
	F/S Cam Till	xx	Speed range setting for front and side cameras (maximum).
	Cam Trigger	CAN	Rear gear & blinker signal detection over CAN.
		Analogue	Rear gear & blinker signal detection over Analogue.
	Blinker Mode	Front Cam	Activation of the front cam image when indicators activated.
		Side Cam	Activation of the side cam image when indicators activated.
OSD	POS. X	0 - 100	Horizontal position of OSD screen.
	POS. Y	0 - 100	Vertical position of OSD screen.
	Size	Small	Small OSD menu windows.
		Large	Large OSD menu windows.
	OSD Timeout	2 - 20	Time setting for OSD automatic shut down.
CAN	Bridge speed	-	CAN-Bus connection status
Info	Version	xx.xx.xx	Displays the current software version