

## ● **BLAUPUNKT**

Competence Center Car Multimedia  
Evo-Sales GmbH  
Hastenbecker Weg 33  
31785 Hameln/Deutschland  
www.blaupunkt.com

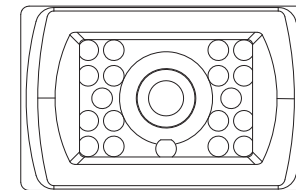


⚠ After the manual, if any change, we will not Notice!

# ● **BLAUPUNKT**

## Rearview Camera RVC 2.0




2.009.019.000.000



### Product Features:

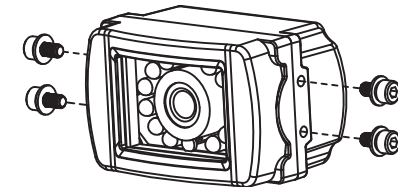
- High Performance CMOS Sensor
- IR LED Low Light Enhancement
- Waterproof (IP69K)
- Wide View Angle

### Camera to bracket hardware

Specifications	Q'ty
 Hex Socket Head M4 X 8L Stainless screws	4
 Flat washer 4.5 X 9.5 X 1mm Stainless	4
 Spring washer 6.6X4.0X1.0mm Stainless	4

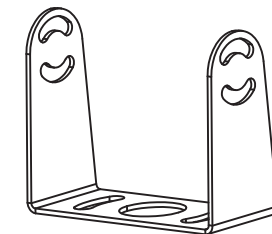
Specifications	Q'ty
 Allen	1

### Installation



#### Screw For Use

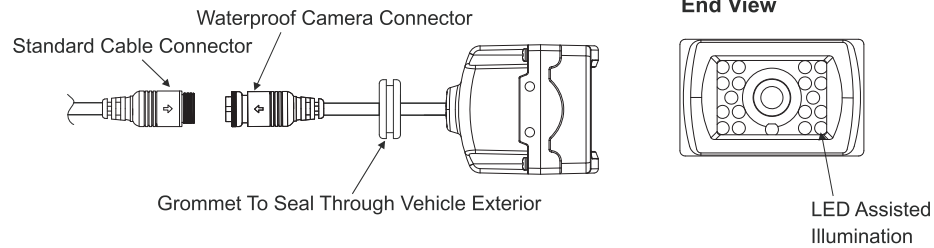
Hex Socket Head M4 X 8L Stainless screws  
Stainless Allen wrench



### Contents:

- Camera
- Bracket
- Hardware Kit

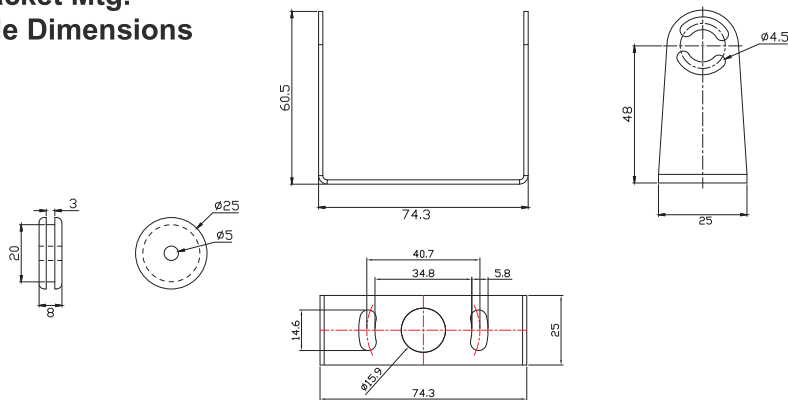
### Installation and Pin Out:



### Specifications

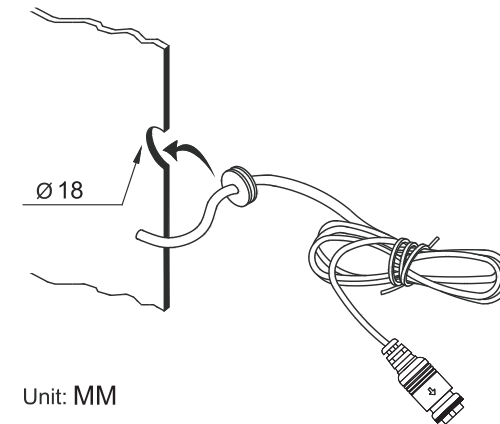
Mounting Type	External type
Image sensor	1/4" CMOS camera
Resolution	480 TV lines
Min illumination	1.0 Lux at F2.0 0 Lux with IR on
Water resistance	IP69K
View angle	95(H), 80(V), 120(D)
Dimension	77(W), 44.6(H), 55(D)mm
Working temperature	-20 C ~ +70 C
Weight	Approx. 0.50kg / 0.84lbs

### Bracket Mtg. Hole Dimensions



Unit: MM

### Recommended grommet Hole



Unit: MM

## ● **BLAUPUNKT**

Competence Center Car Multimedia  
Evo-Sales GmbH  
Hastenbecker Weg 33  
31785 Hameln/Deutschland  
www.blaupunkt.com

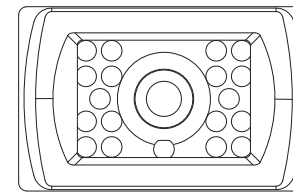


⚠ After the manual, if any change, we will not Notice!

# ● **BLAUPUNKT**

## Rückfahrkamera RVC 2.0

2 009 019 000 001






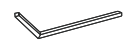
### Produkt Features:

- High Performance CMOS Sensor
- IR LED Beamer
- Wasserfest, Schutzklasse IP69K
- Weitwinkel

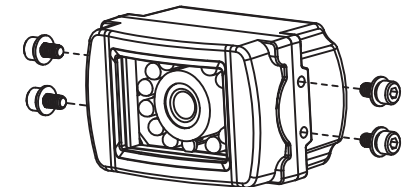
GERMAN

### Kamera zur Hardware-Halterung

Beschreibung	Anzahl
 M4 * 8L Edelstahlschrauben mit Innensechskant	4
 Flache Unterlegscheibe 4,5 * 9,5 * 1 mm rostfrei	4
 Federscheibe 6,6 * 4,0 * 1,0 mm rostfrei	4

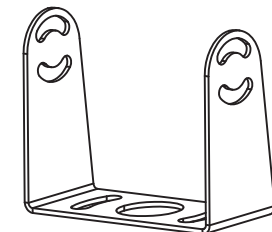
Beschreibung	Anzahl
 Inbusschlüssel	1

### Einbau



### Einsatzschrauben

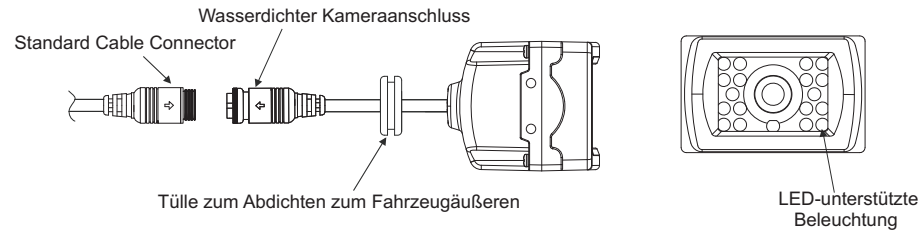
M4 \* 8L Edelstahlschrauben mit  
Innensechskant  
Edelstahl-Inbusschlüssel



## Inhalt:

Kamera  
Halterung  
Hardware-Kit

## Installation und Pin Out:



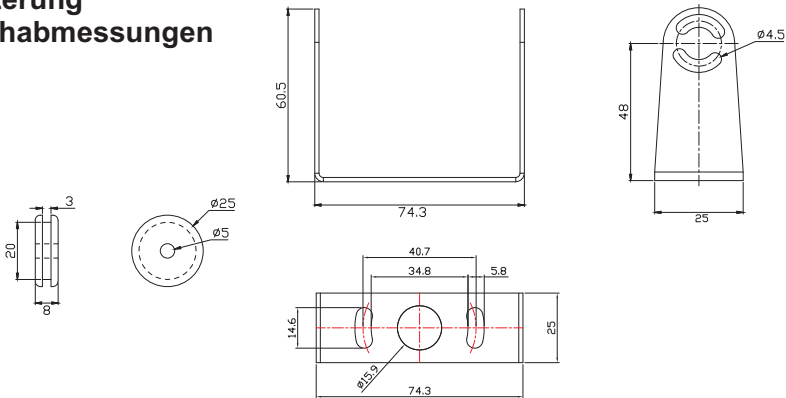
## Beschreibung

Befestigungsart	Extern
Bild Sensor	1/4" CMOS Kamera
Resolution	480 TV lines
Min. Beleuchtung	1.0 Lux at F2.0 0 Lux with IR on
Wasserfest	IP69K
Blickwinkel	95(H), 80(V), 120(D)
Abmessungen	77(W), 44.6(H), 55(D)mm
Arbeitstemperatur	-20 C ~ +70 C
Gewicht	Approx. 0.50kg / 0.84lbs

1

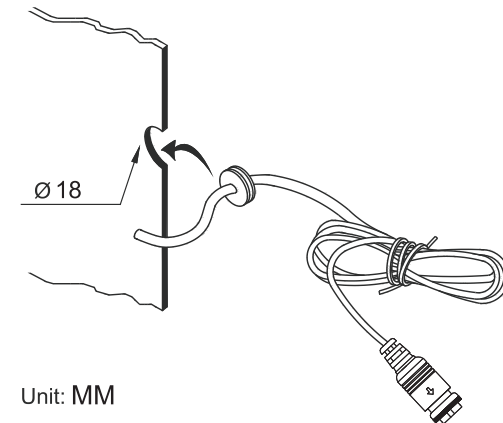
6

## Halterung Lochabmessungen



Unit: MM

## Empfohlenes Tüllenloch



3

4